

380 TERRA COTTA ROAD
SUITE G
CRYSTAL LAKE, IL 60014

FOR LEASE

MLS # 10817965

January 25, 2021



OFFICE SUITE
2,300 SF

\$16.00 psf Gross
\$3,067/mo.

DESCRIPTION

PROFESSIONAL OFFICE SUITE
Immediate Occupancy

Only one suite remains available in this multi-tenant single-story, brick professional office building.

Suite G: 2,300 SF Professional office suite with 6 private offices, conference room, 2 baths, kitchenette and reception area with built-in desk. Leases for \$3,067/month Gross.

Monument signage available.

SPECIFICATIONS

Building Size	18,000 SF
Year Built	2007
HVAC System	GFA / Central Air
Electrical	100 AMP
Sprinklers	No
Washrooms	2 ADA
Ceiling Height	9'
Parking	Common
Sewer/Water	City
Zoning	M-Commercial
CAM & Taxes	Included in Rent
Possession	Immediate
Lease Term	Negotiable
PIN	14-33-283-011

No warranty or representation is made as to the accuracy of the foregoing information. Terms of sale or lease and availability are subject to change or withdrawal without notice. This document is for information purposes only. No offer of sub-agency is being made.



- Industrial
- Commercial
- Office
- Land
- Business

CLICK HERE
to view our website

9225 S. IL Route 31
Lake in the Hills, IL 60156
www.PremierCommercialRealty.com
Office: 847-854-2300 | Fax: 847-854-2380

HEATHER SCHWEITZER

Vice President/Managing Broker

Office: 847-854-2300 Ext 15

Cell: 815-236-9816

HeatherS@PremierCommercialRealty.com

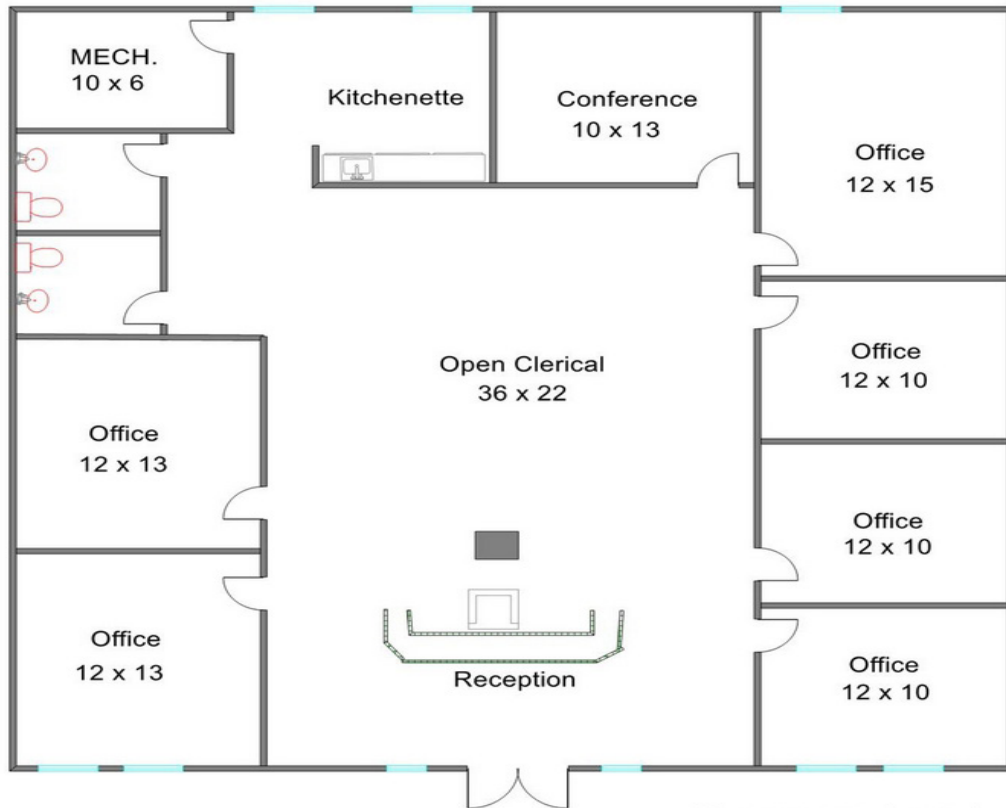
380 TERRA COTTA ROAD
SUITE G
CRYSTAL LAKE, IL 60014

FOR LEASE



FLOOR PLAN - SUITE G

SUITE G 2,300 SF



Measurements Approximate



- Industrial
- Commercial
- Office
- Land
- Business

[CLICK HERE](#)
to view our website

9225 S. IL Route 31
Lake in the Hills, IL 60156
www.PremierCommercialRealty.com
Office: 847-854-2300 | Fax: 847-854-2380