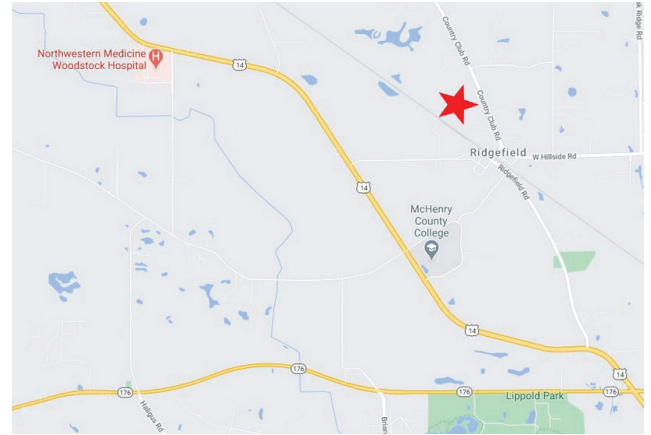


0 S. COUNTRY CLUB ROAD WOODSTOCK, IL 60098

FOR SALE

MLS #10689235

June 17, 2021



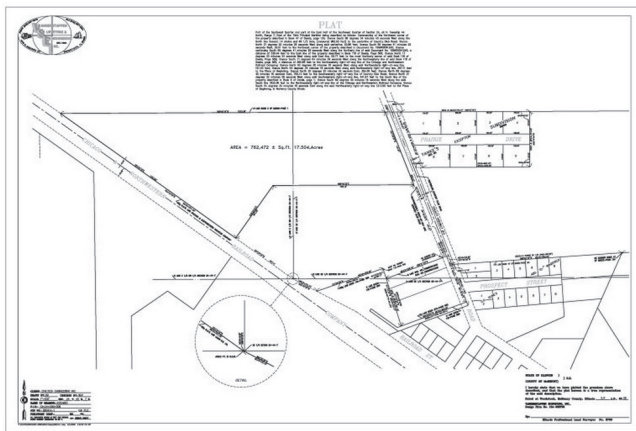
INDUSTRIAL LAND — ±17.5 AC

\$995,000 (\$1.30 psf)

DESCRIPTION

Rare Large Industrial Lot for Sale

Very rare McHenry County large ±17.5 acre industrial lot for sale at just \$1.30 psf. Property is under the jurisdiction of the county, not any municipality. Adjacent to Alexander Lumber Company and rail access at rear of parcel is possible.



SPECIFICATIONS

Description	Industrial Land
Land Size	±17.5 Acres (762,300 SF)
Topography	Flat
Environmental Status	TBD
Utilities	To Site
Sewer/Water	Septic/Well Required
Frontage Dimensions	442'
Zoning	Industrial
Real Estate Taxes	\$722.62 (2020)
Possession	At Closing
PIN Number	13-24-300-018

No warranty or representation is made as to the accuracy of the foregoing information. Terms of sale or lease and availability are subject to change or withdrawal without notice. This document is for information purposes only. No offer of sub-agency is being made.

PREMIER
COMMERCIAL REALTY

- Industrial
- Commercial
- Office
- Land
- Business

[CLICK HERE](#)
to view our website

MICHAEL DEACON
Senior Broker
Office: 847-854-2300 Ext 28
Cell: 815-814-6500

MichaelD@PremierCommercialRealty.com

9225 S. IL Route 31
Lake in the Hills, IL 60156
www.PremierCommercialRealty.com
Office: 847-854-2300 | Fax: 847-854-2380