

- Industrial
- Commercial
- Office
- Land
- Business

FOR LEASE

INDUSTRIAL SPACE 4,000 SF

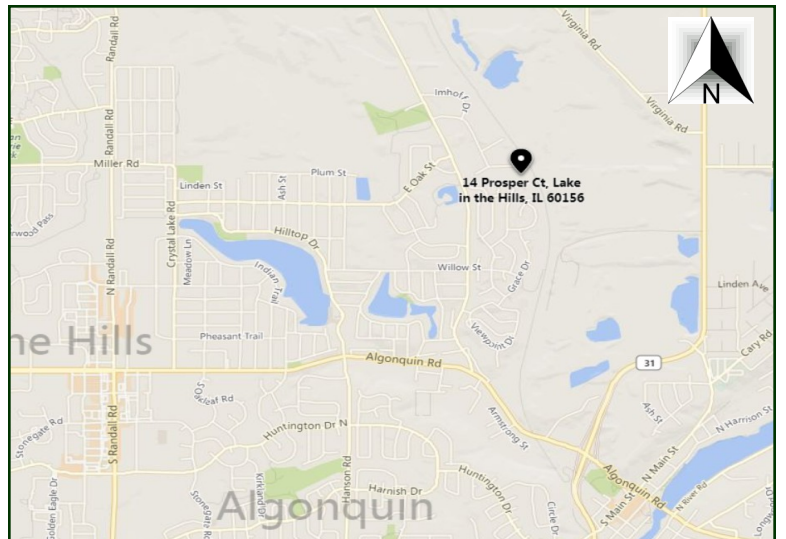
Units 1&2 (combined) 4,000 SF warehouse w/ mezzanine, (2) 12x14 DID's, 700 SF office and (2) baths. Monument signage and assigned parking spaces. See attached layout. Visit Premier Commercial Realty website to see more listings.

PROPERTY SPECIFICATIONS

Description:	Multi Tenant Industrial
Year Built:	1988
Building Size:	30,222 SF
Land Size:	2.37 acres
Office:	700 SF
HVAC System:	A/C (office only) GFA Ceiling Mount (warehouse)
Power:	200 amp 3 phase
Sprinklered:	No
Floor Drains:	No
Ceiling Height:	14'-16'
Parking:	70 Spaces Assigned Parking
Washroom (s):	2
Truck Docks:	1 (common) exterior
Drive-in-Doors:	(2) 12'x14'
Sewer: City	Water: Well
Possession:	Immediate
Zoning:	M1
CAM & Taxes:	Included in Rent
Lease Term:	2-5 Years
Lease Price:	\$2,250/mo. Gross (\$6.75 psf)



MLS: 10118169



DIRECTIONS: Pyott Road to Industrial Drive, Left on Prosper Ct to end.

PIN: 19-21-401-004

October 18, 2018

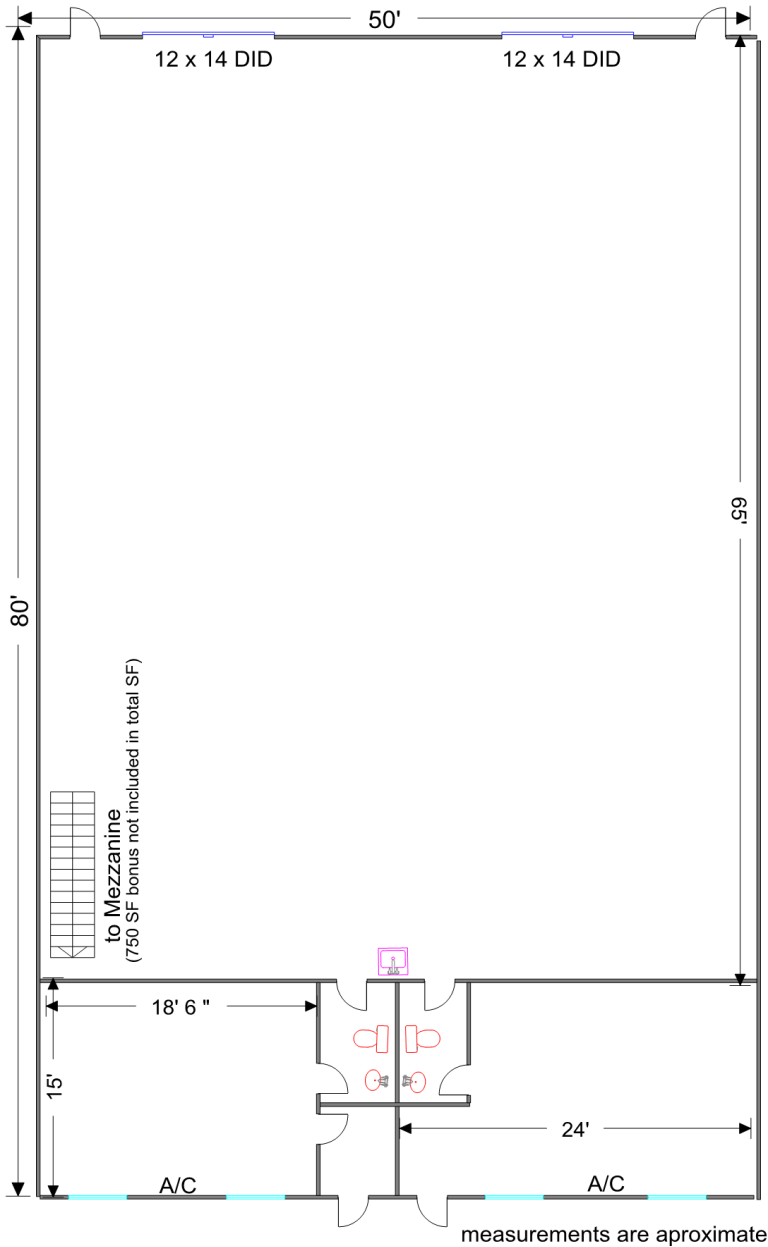
No warranty or representation is made as to the accuracy of the foregoing information. Terms of sale or lease and availability are subject to change or withdrawal without notice. This document is for information purposes only. No offer of sub-agency is being made.

[CLICK HERE](#)
TO VISIT OUR WEBSITE

www.PremierCommercialRealty.com

- Industrial
- Commercial
- Office
- Land
- Business

14-16 Prosper Court Units 1,2
Lake in the Hills, IL 60156



UNITS 1-2
4,000 SF



	Unit 10			
Unit 9		Unit 11	Unit 12	Unit 13
Unit 8				Unit 14
Unit 7				
Unit 6				
Unit 5				
Unit 4				
Unit 3				
Unit 2				
Unit 1	★			