

- Industrial
- Commercial
- Office
- Land
- Business

FOR SALE

16 to 89.08 Acres Full I-90 Interchange Access by November 2019

3 parcels totaling 89.08 acres. I-90 exposure, borders Route 23 and Harmony Road. The city of Marengo's southwestern sub area plan reflects potential zoning as Regional Commercial, Office Research or Light Industrial which includes industrial, warehouse, retail development, hotel and a variety of other uses. Only 5 miles to downtown Marengo (Route 20). Individual parcels subject to offer. Contact Heather for more information. Visit Premier Commercial Realty website to see more listings.

MLS: 09749586

PROPERTY SPECIFICATIONS

Description:	Land at I-90 Interchange
Land Size:	89.08 acres / 3,880,325 SF
Possession:	At closing
Topography:	Level
Environmental Status:	TBD
Utilities:	Nearby
Sewer/water:	At city limits
Frontage Dimensions:	I-90: 2,083± Route 23: 640± Harmony Rd: 3,622±
Zoning:	AG (Potential Zoning: Light Industrial, Office Research, Regional Commercial)
Real Estate Taxes:	\$3,047.48 (2018 combined)
Sale Price:	\$3,235,653 \$36,323 per acre / \$.83 psf

No warranty or representation is made as to the accuracy of the foregoing information. Terms of sale or lease and availability are subject to change or withdrawal without notice. This document is for information purposes only. No offer of sub-agency is being made.

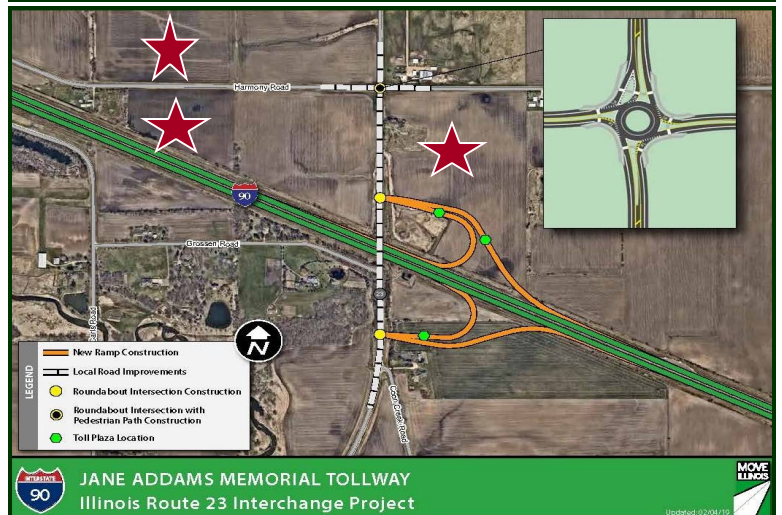
16 - 89.08 ACRES AVAILABLE



Demographics

	3 miles	5 miles
Avg. HH Income	\$78,125	\$73,976
Population	2,201	9,060

TRAFFIC COUNTS:
66,000 Vehicles per day I-90 at Route 23



Directions: Route 20 (Grant Hwy.) west to Route 23 (State St.), south to Harmony Rd. intersection

PIN: 16-26-200-009 = 34.22 acres
16-26-100-016 = 16.00 acres
16-23-300-003 = 38.86 acres

July 8, 2019

[CLICK HERE](#)
TO VISIT OUR WEBSITE

www.PremierCommercialRealty.com